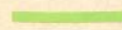
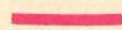
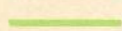
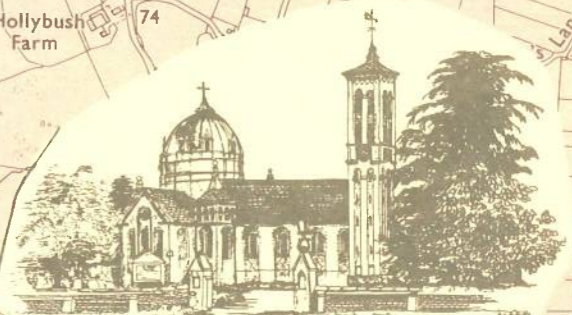
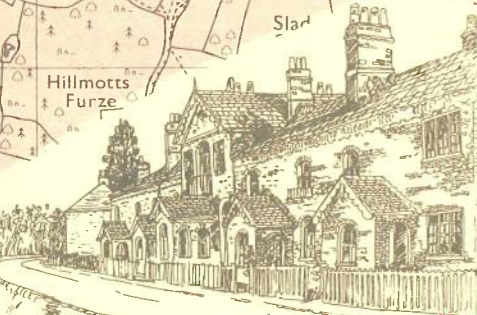
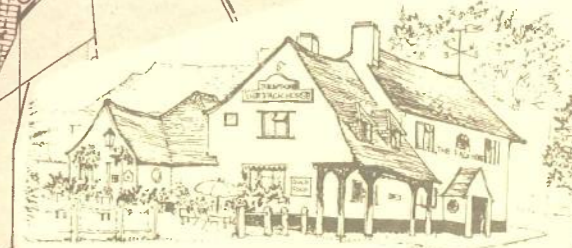
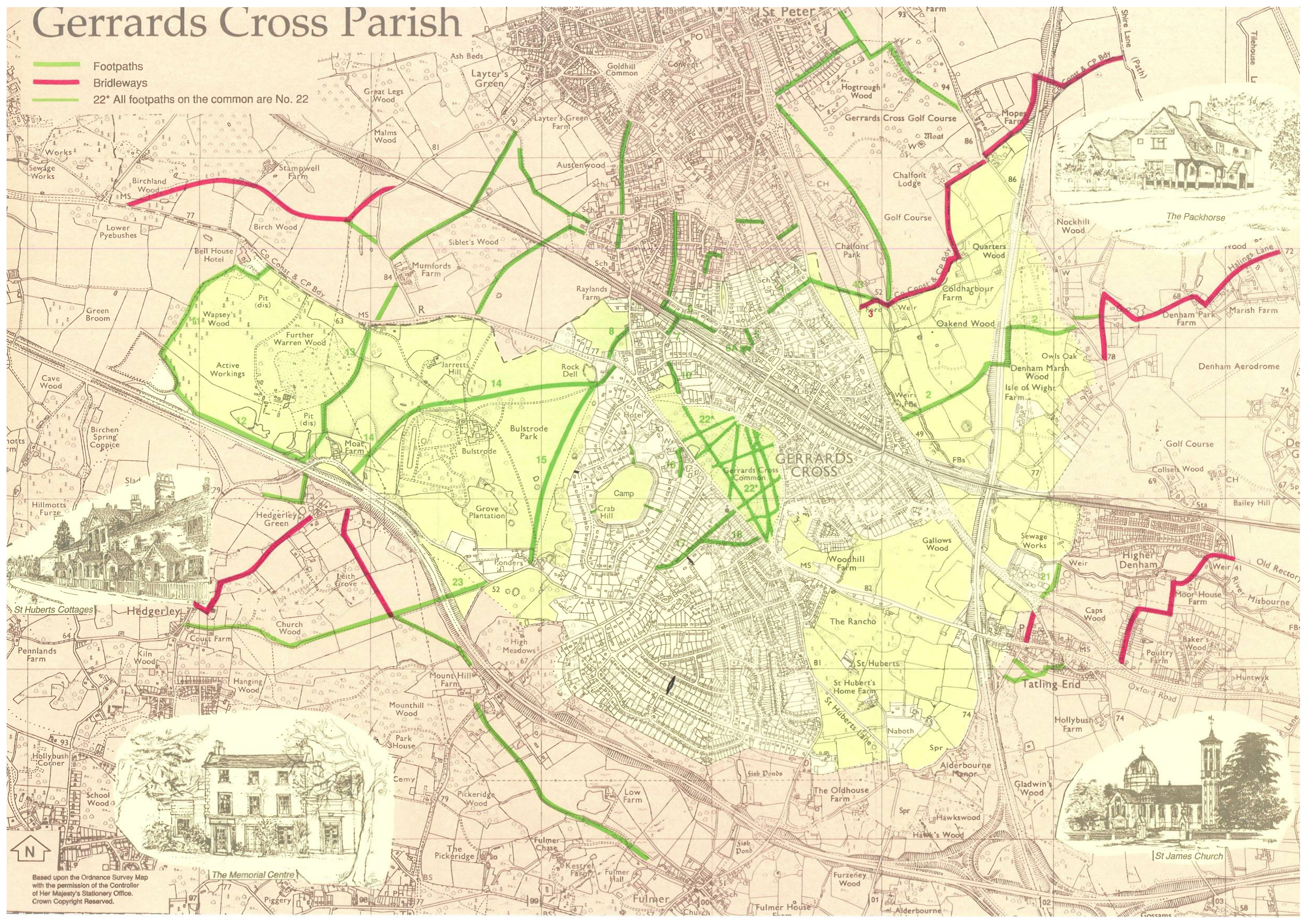


Gerrards Cross Parish

-  Footpaths
-  Bridleways
-  22* All footpaths on the common are No. 22



Based upon the Ordnance Survey Map with the permission of the Controller of Her Majesty's Stationery Office. Crown Copyright Reserved.

This Footpath Map is prepared as part of the celebration of the Centenary of the Parish Council of Gerrards Cross.

Gerrards Cross Parish Council first met on 29 October 1895. The village had a population of about 600, and most people went about their business by walking or riding along the tracks and paths which crossed the village and meandered away to Hedgerley, Fulmer, Denham and Chalfont St Peter.

Jarrets Cross, as it was known by the locals, consisted of big estates like Bulstrode, St Huberts, Orchehill and Chalfont Park, outlying farms and a few houses, mostly around the edge of the Common where the local people grazed their beasts. There was a church, four pubs and a village school, as well as a Post Office, smithy and slaughterhouse. There was no mains drainage, each house having its own privy, and a well for water. The water was plentiful and good, so much so that the public pump, which still stands at Oxford Road crossroads, attracted people from as far away as Uxbridge as a cure for their rheumatism.

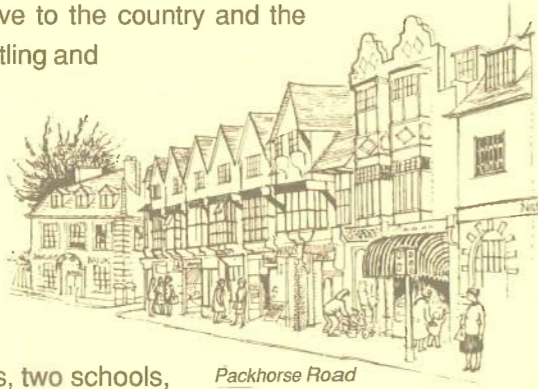


The Bull Hotel

The Great Western Railway to the south and the Metropolitan Railway to the north had bypassed the village and taken most of the traffic off the once busy Oxford Road. Coachmen no longer changed horses at the Bull Inn. Getting to London involved hiring a fly to be driven the five dusty or muddy miles to Uxbridge, there to catch the Great Western branch line to West Drayton.

Then, in 1906, the Great Central Railway came to Gerrards Cross, built in part by the band of navvies we celebrate in the statue at the railway station and on the front of this leaflet. Gerrards Cross was on the map. People were attracted to move to the country and the village developed into the bustling and active centre we see today.

Now, in 1995, one hundred years after our first Parish Council meeting, we have a population of 7,300 and growing. We have a range of thriving shops, three churches, two schools, a cinema and a variety of businesses large and small. We still have our Common, uniquely in the middle of the village, wooded now with no grazing herds, and jealously cared for. We have the Camp, an Iron Age fortified settlement undoubtedly the home of the earliest Gerrards Cross resident. We have our two ponds on the Common, and we still have our footpaths and bridleways - many on the lines of the old tracks that have disappeared from the maps, and we still use them.



Packhorse Road

Each of our footpaths and bridleways is numbered and registered, and is open for use at all times. In 1993 the Parish Council and the County Council joined with the Countryside Commission in the Parish Paths Partnership, to ensure that our footpaths are kept in good condition. Each path is regularly walked by our footpath wardens and by councillors to ensure the



St Mary's School - Orchehill House

footway is in good shape, vegetation is cut back and waymarks are visible. Should work be needed, the Parish Council tell the County Council, who either do the work themselves or give the parish the money to do it. When you use any of our footpaths, should you encounter any difficulties please contact the Parish Council on 01753 888018, or the County Council Rights of Way Officer on 01296 382697.

The Footpath Map shows all our footpaths and bridleways, with their reference numbers, in the village and beyond. They form a network of pleasant and functional walkways not only in the older residential areas north of the railway, but also in the wooded and open areas of the Common and in the grassland of Bulstrode Park and towards Denham. They join the South Bucks Way at Chalfont St Peter, this path runs from Denham to Wendover, and the Beeches Way at Fulmer, this path runs from Cookham to the canal at West Drayton. Details of these longer paths can be found in the public library.



Latchmoor Pond

West Drayton. Details of these longer paths can be found in the public library.

We hope this Footpath Map will add to your enjoyment of the village and the countryside, whether you walk, ride or cycle our footpaths and bridleways.

We acknowledge with thanks the work of our honorary local artists:- Pauline Clayton, Maureen Marsh and Dorothy Lloyd-Griffiths

When using our paths please observe the Countryside Code
Leave only your footprints
Take only photographs

Gerrards Cross Parish Council Centenary 1895-1995



FOOTPATHS MAP

Scale approx. 3.5 inches = 1 mile



PARISH PATHS
Partnership
A COUNTRYSIDE COMMISSION INITIATIVE

PARISH PATHS